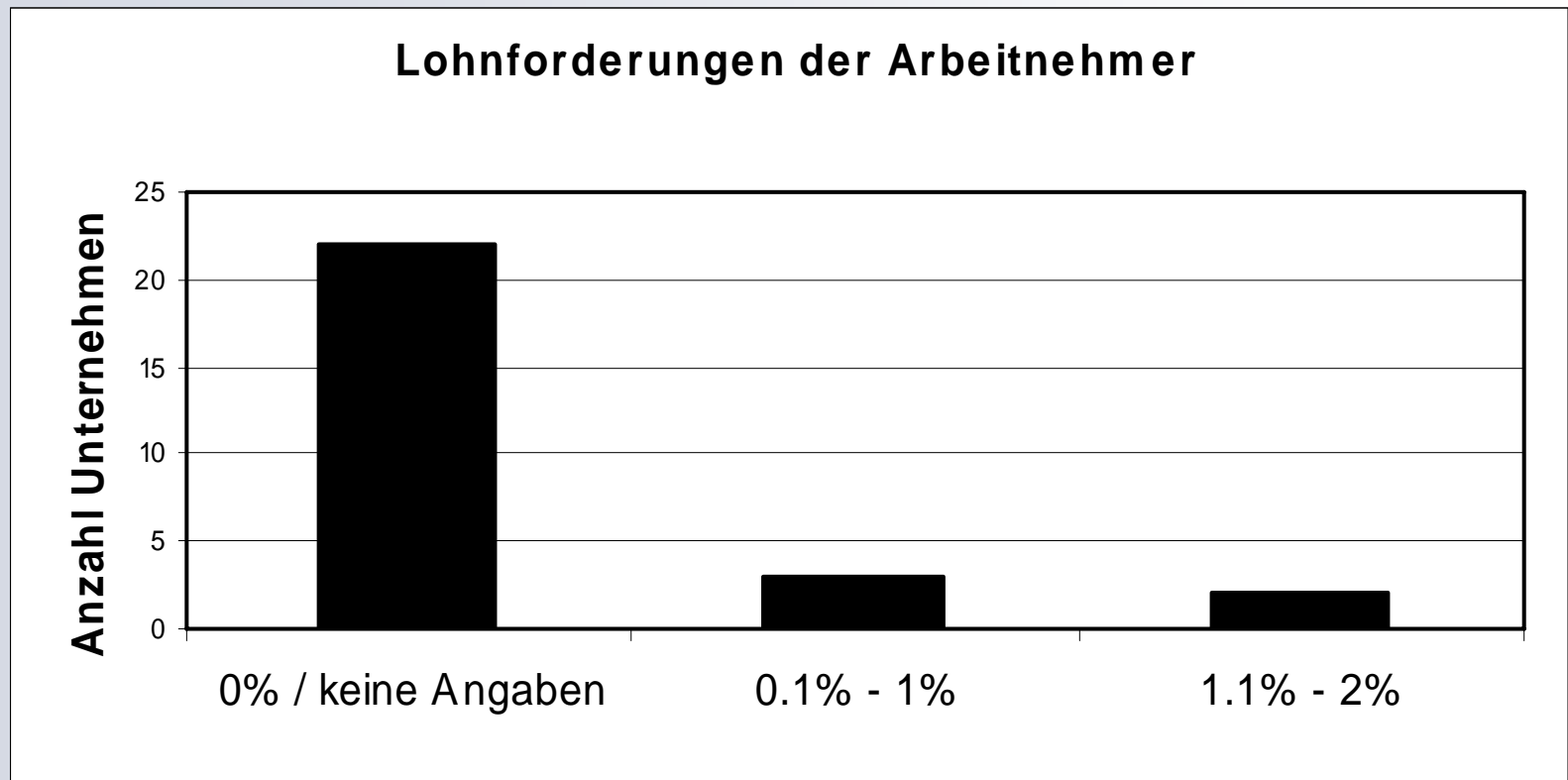


**Regionalgruppe
Wynental der
Aargauischen Industrie-
und Handelskammer**

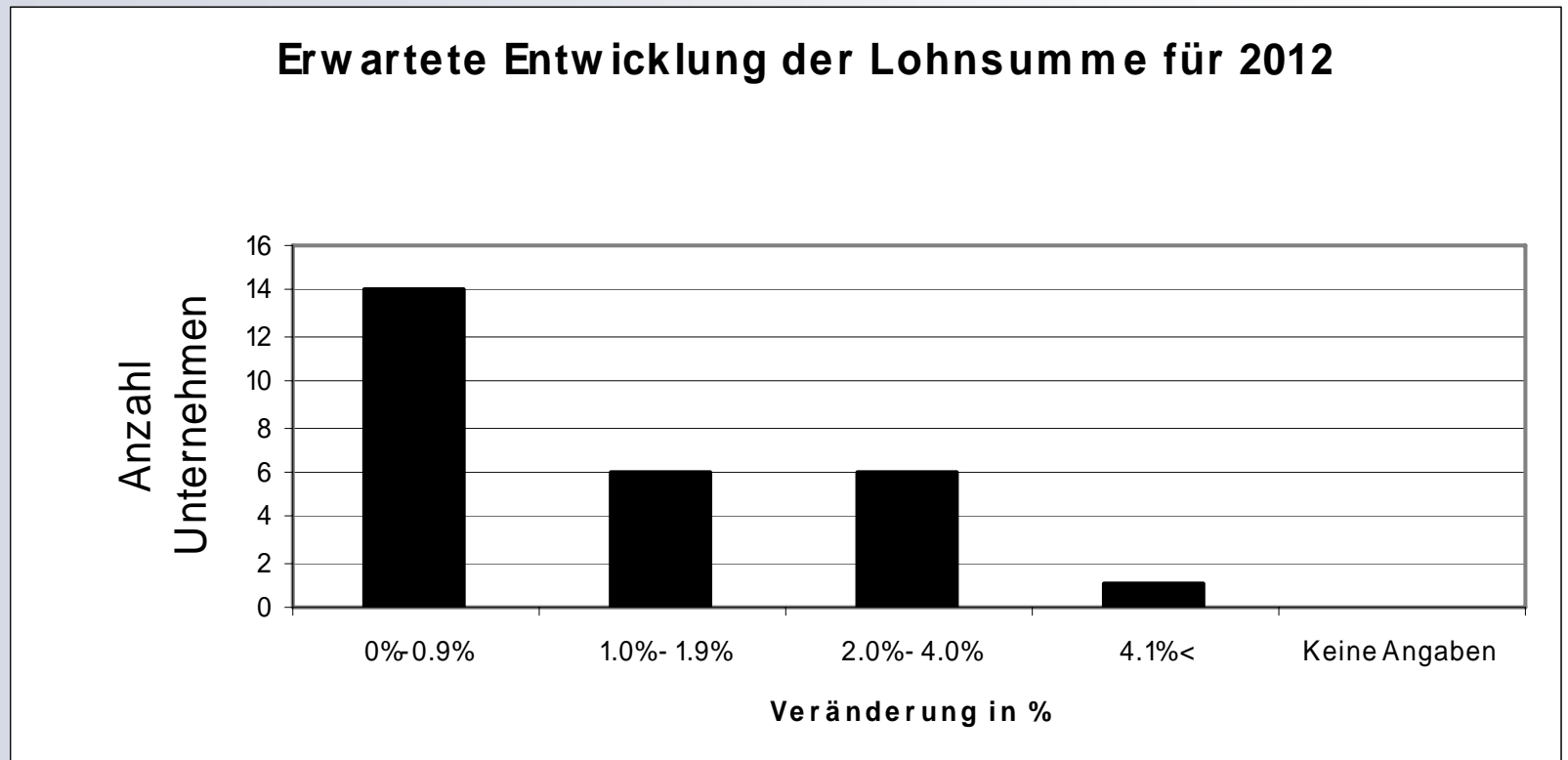
AIHK 2012

Die Umfrage umfasst 27 Betriebe und 2'689 Arbeitsplätze.

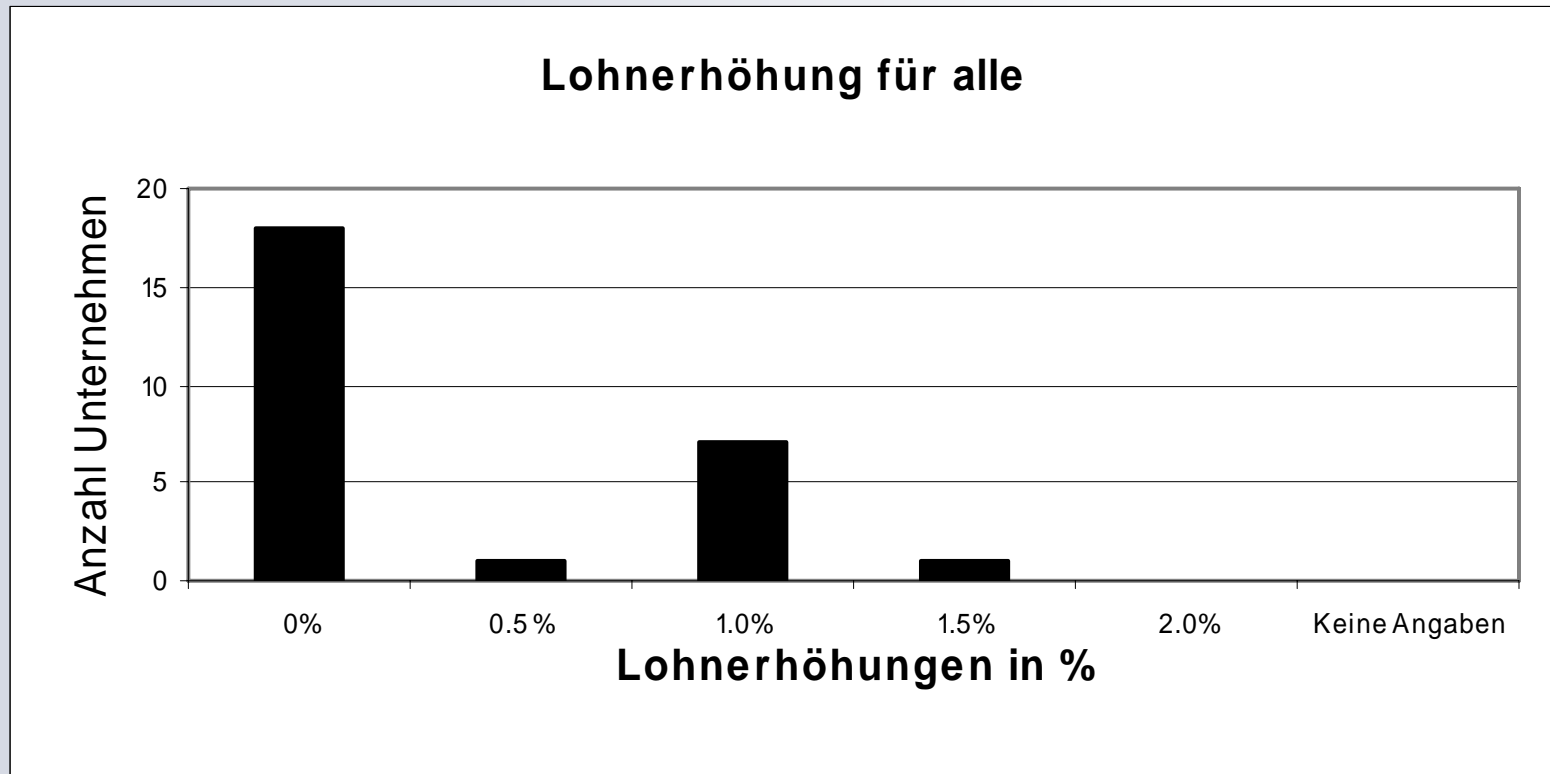
Lohnforderungen der Arbeitnehmer



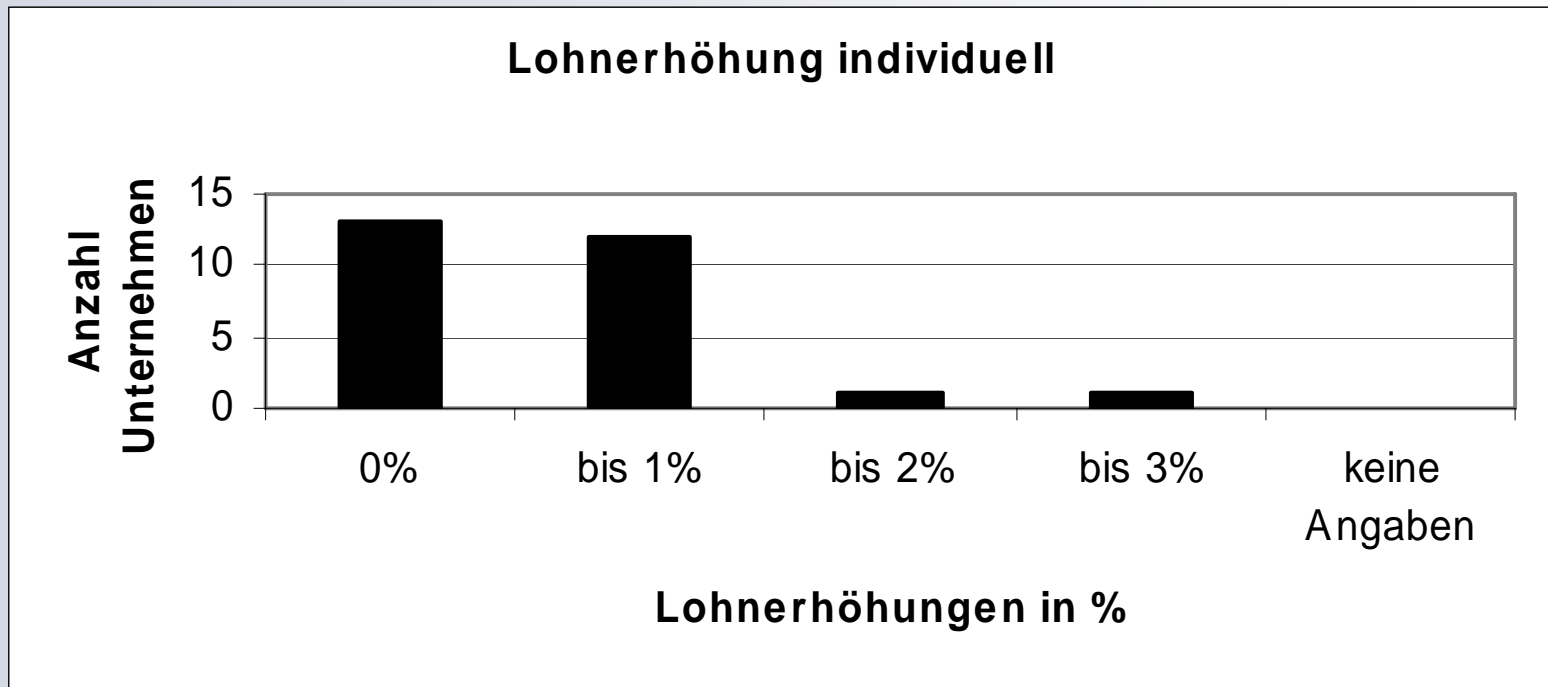
Erwartete Entwicklung der Lohnsumme für 2012



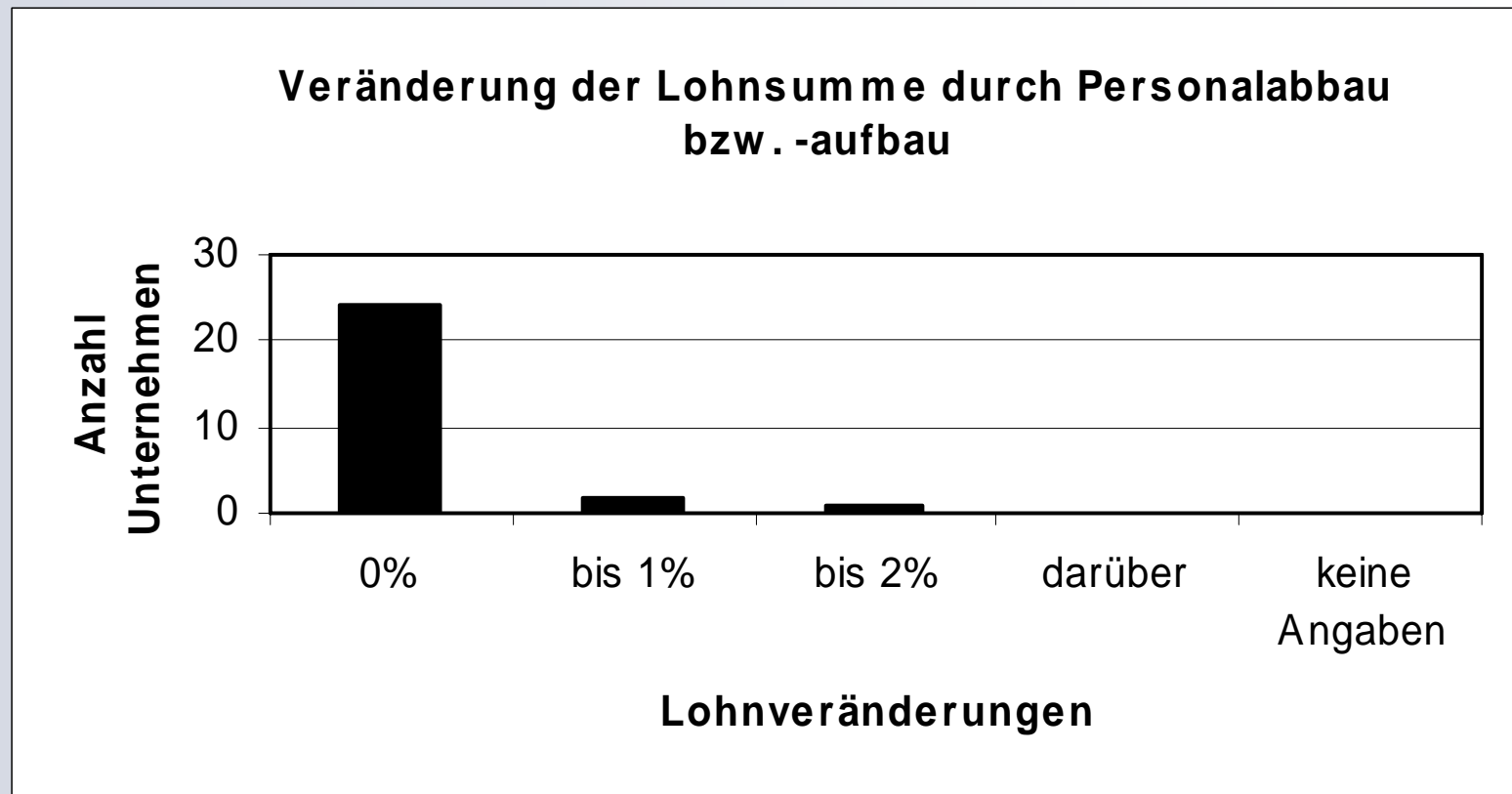
Lohnerhöhung für alle



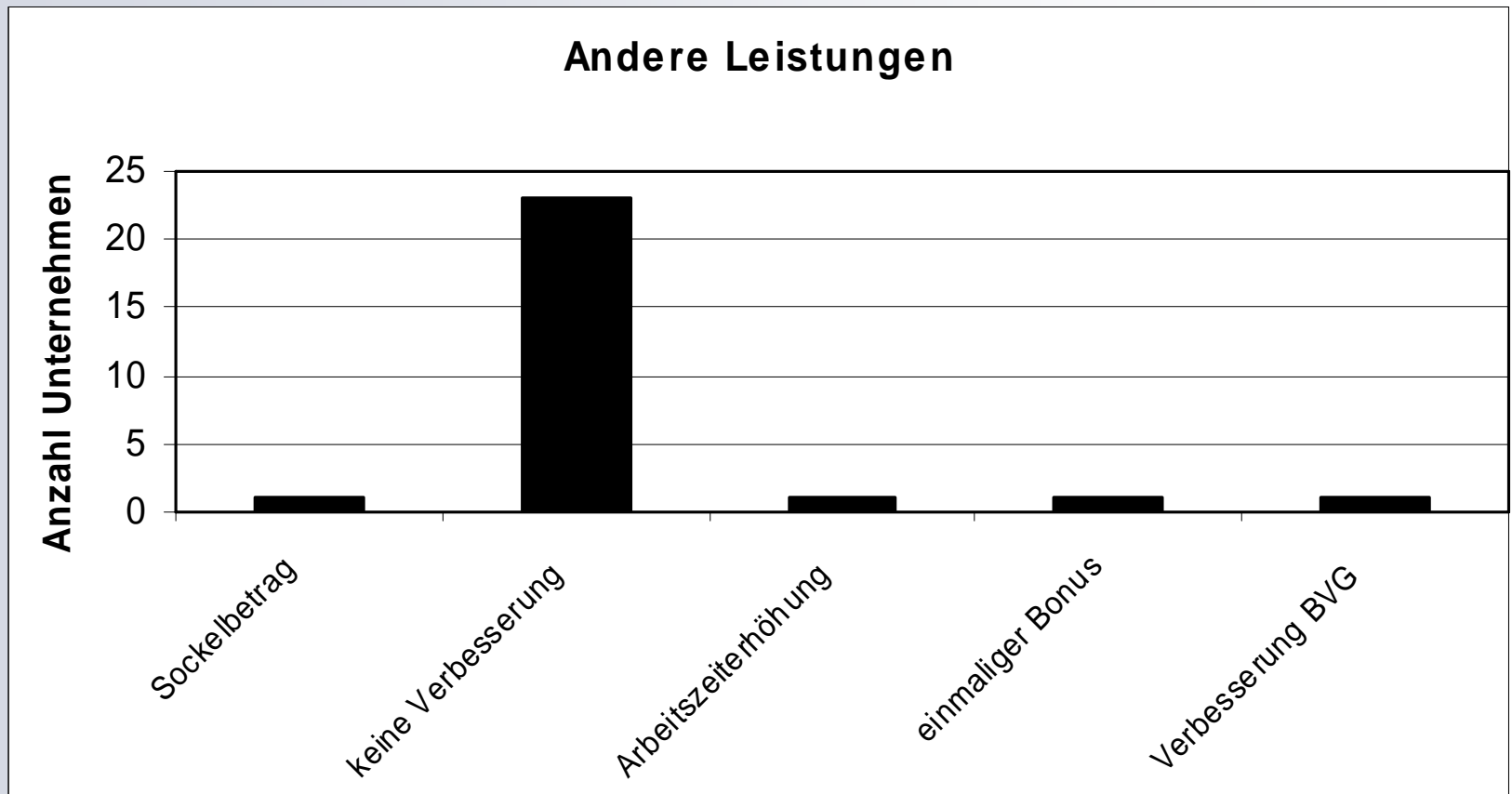
Individuelle Lohnerhöhung



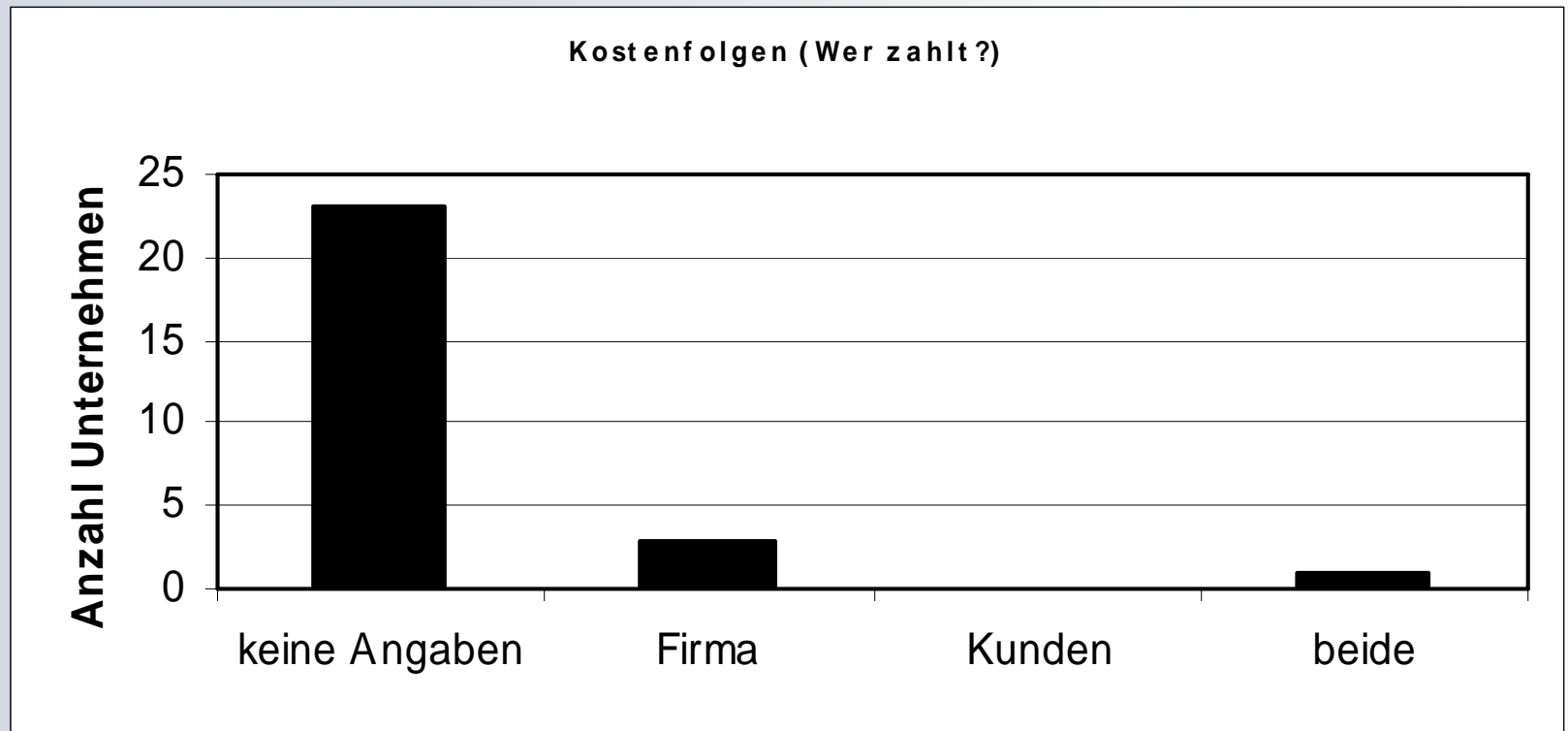
Veränderung der Lohnsumme



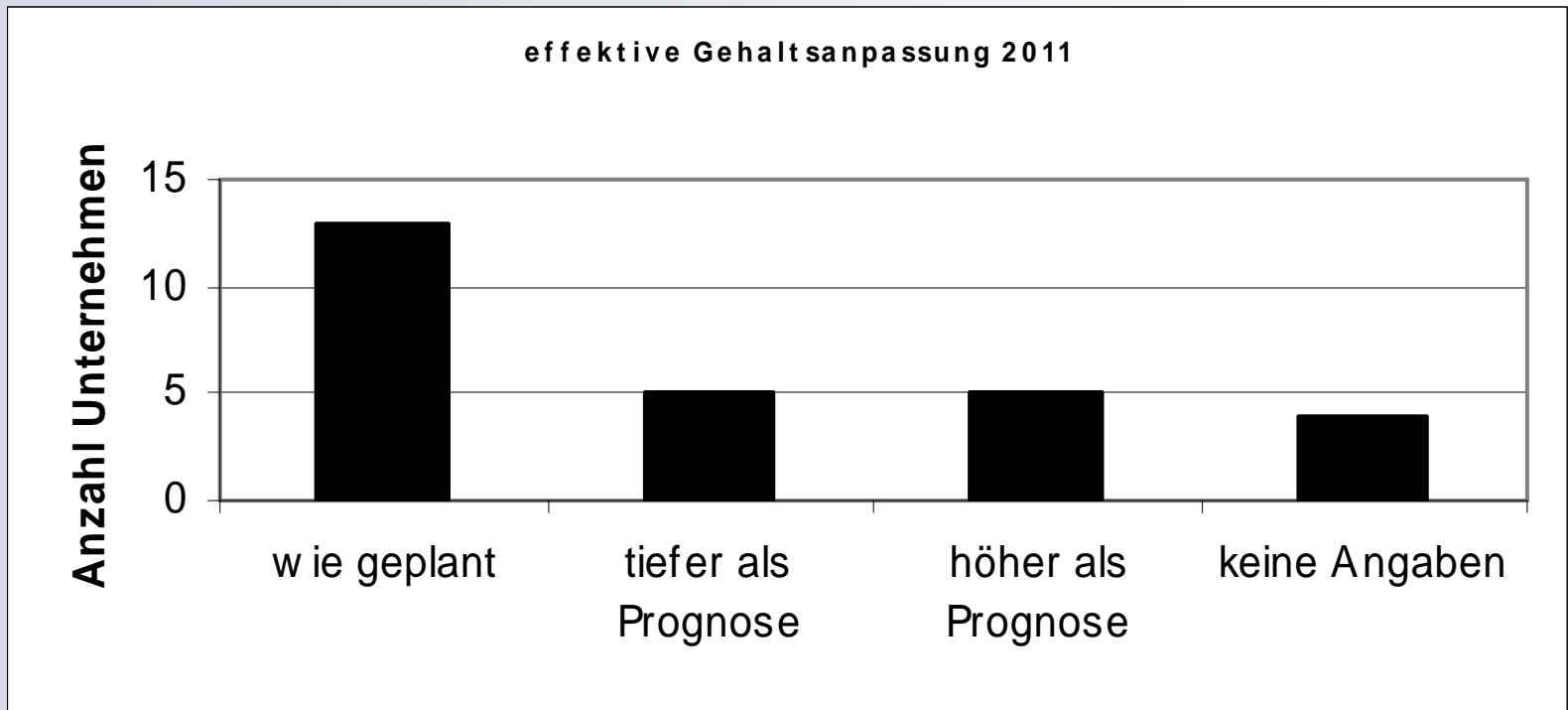
Andere Leistungen



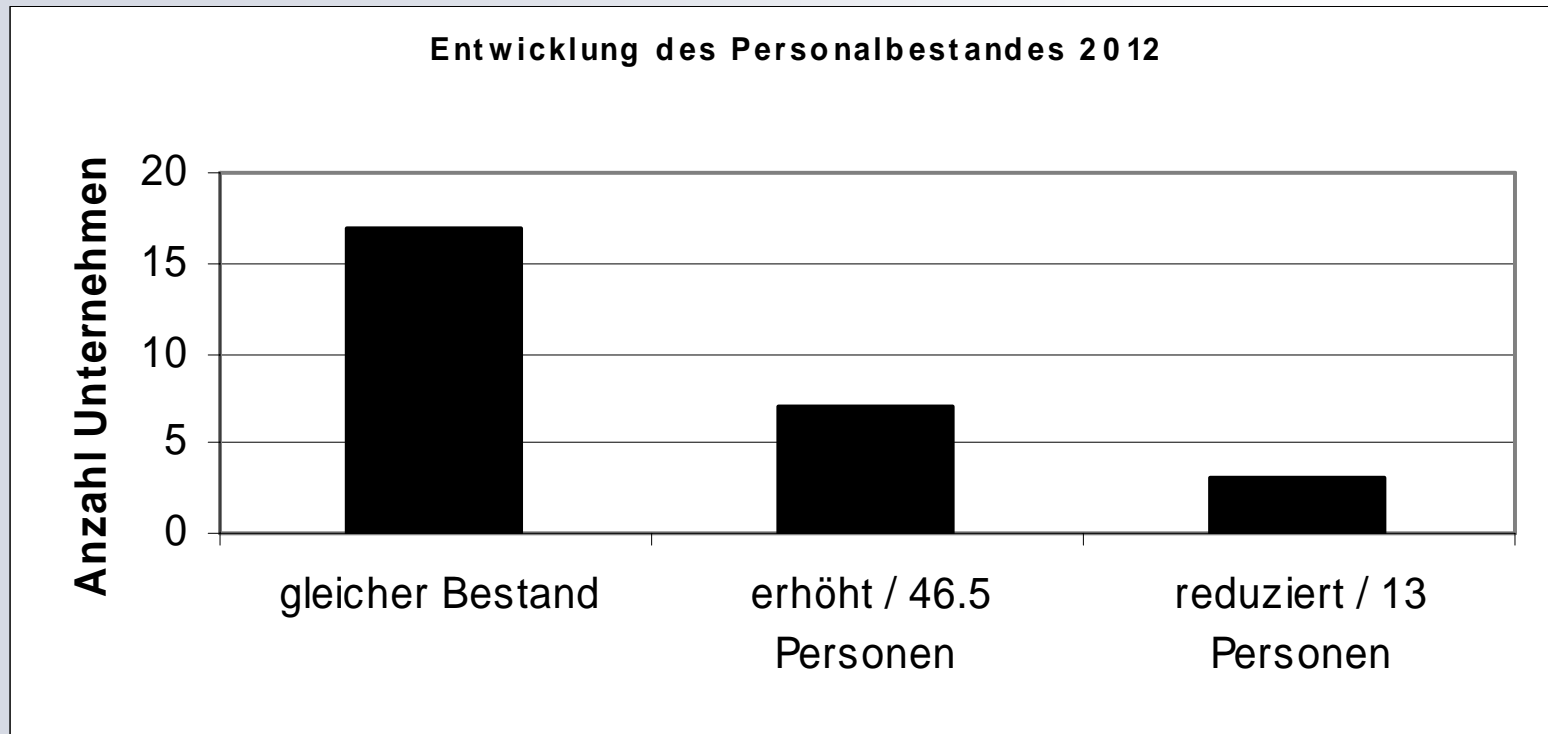
Kostenfolgen



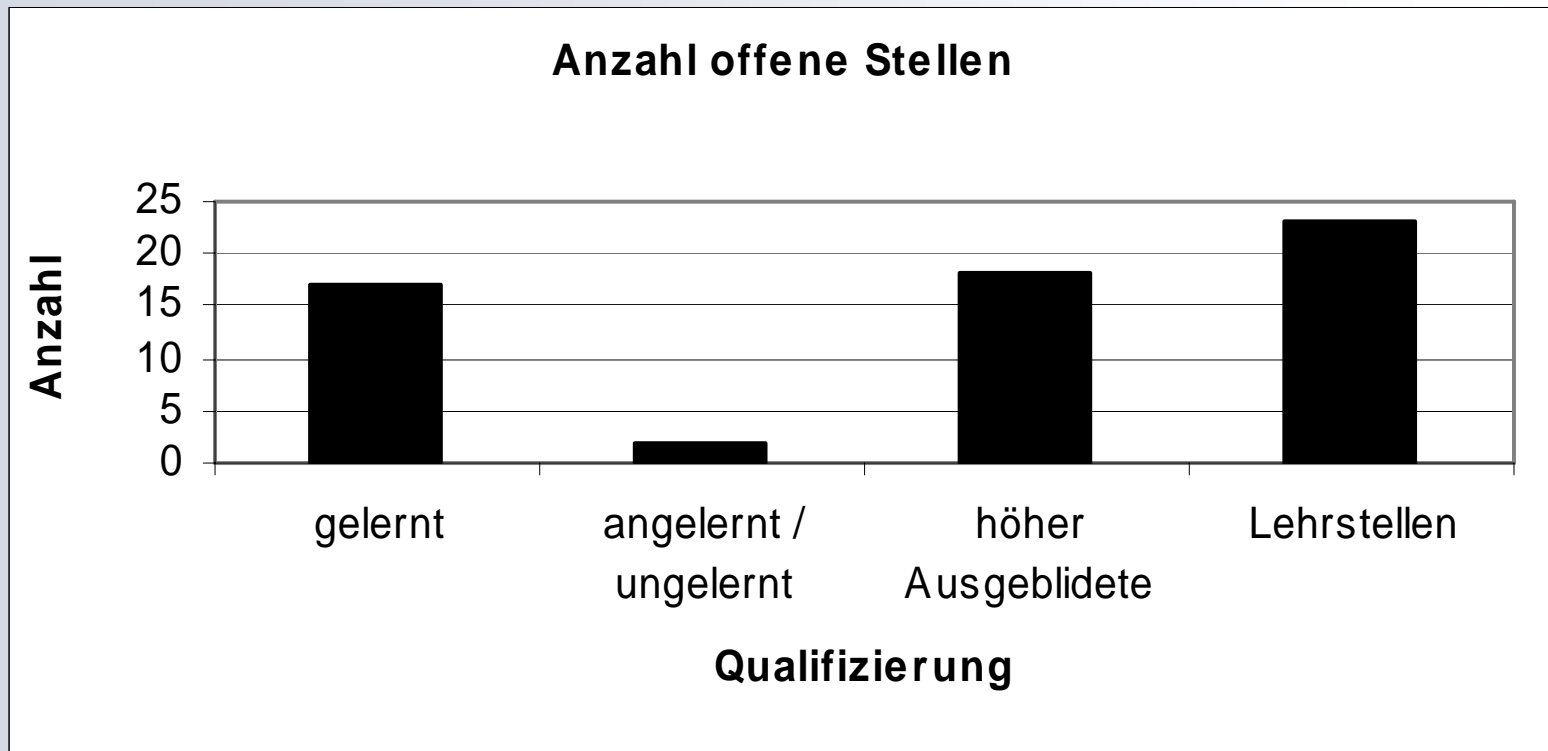
Gehaltanpassung 2011



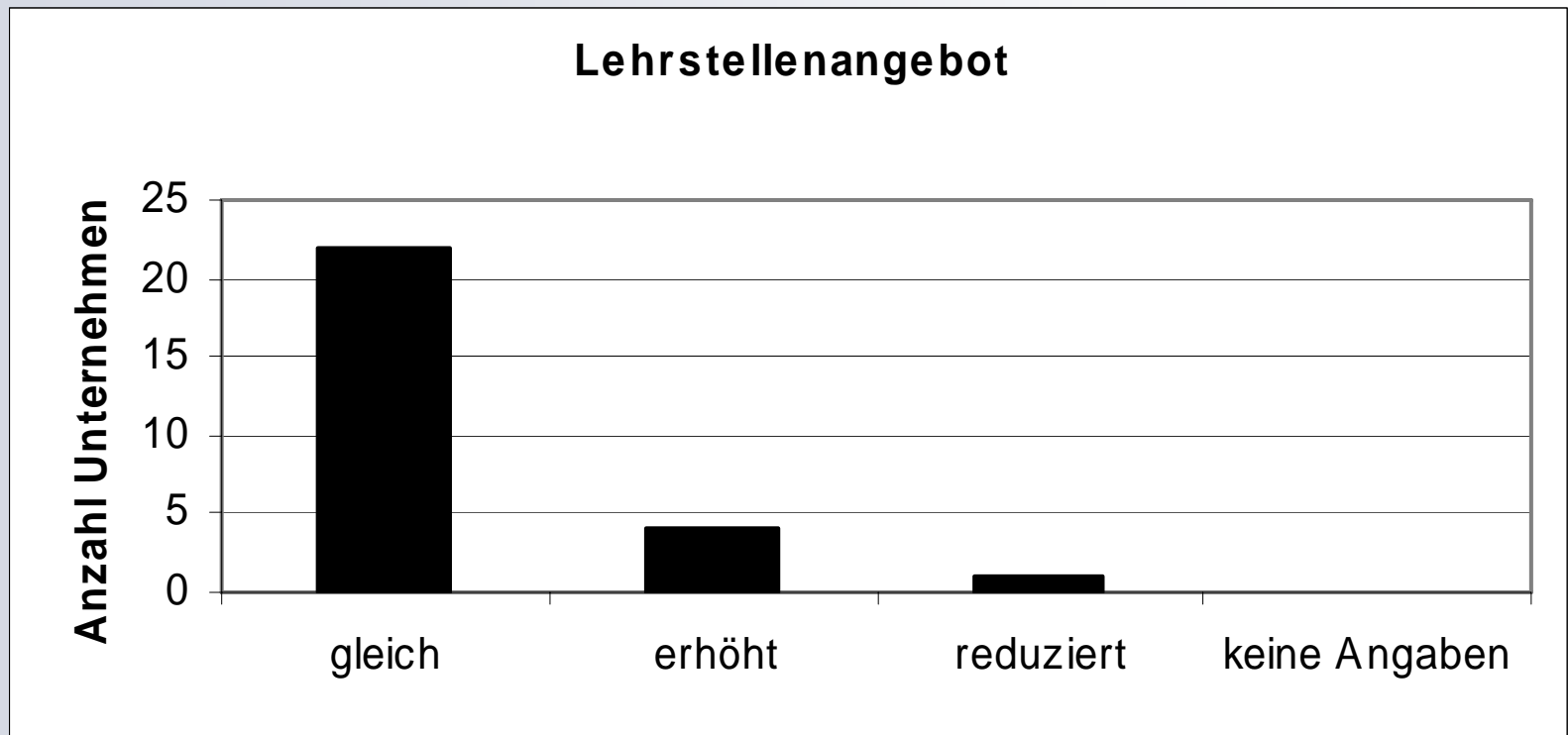
Personalbestand 2012



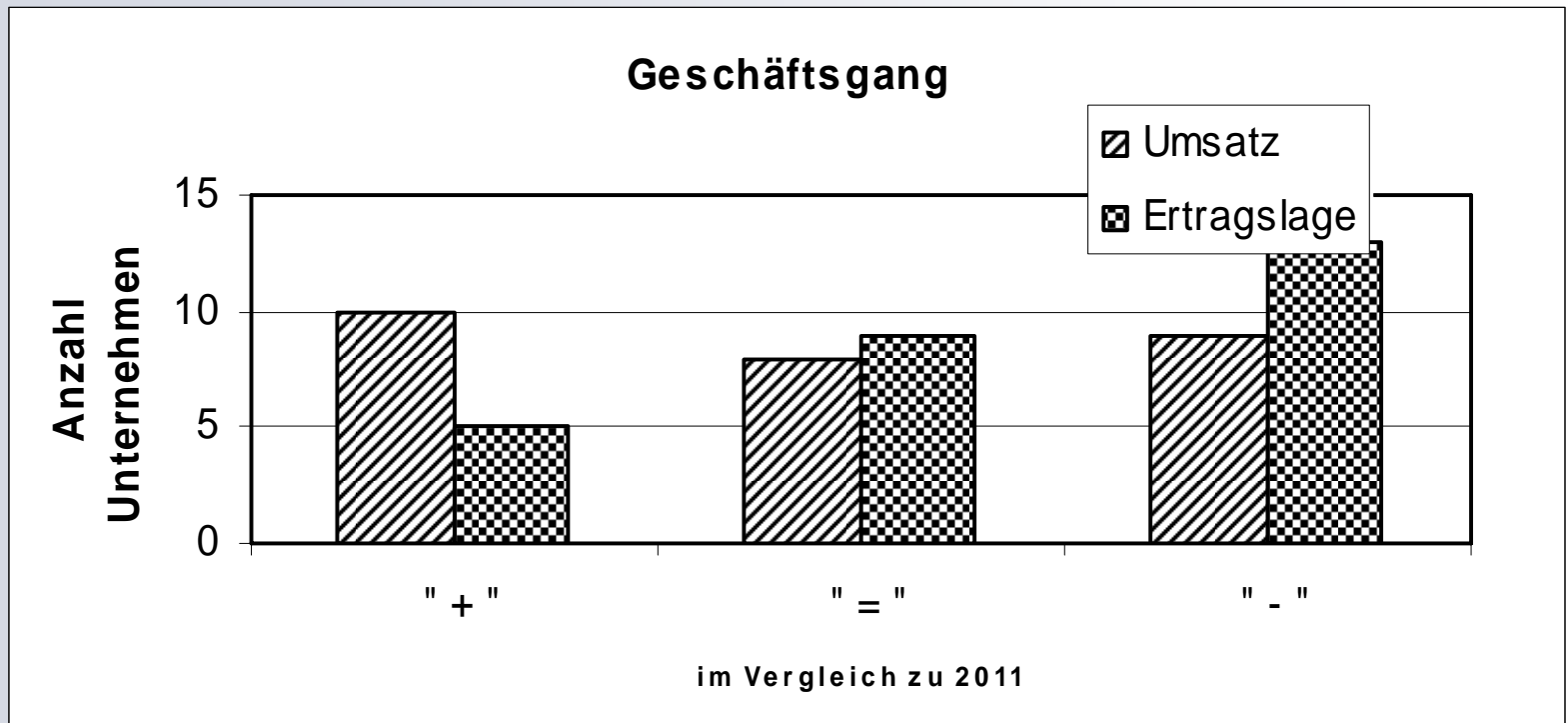
Offene Stellen



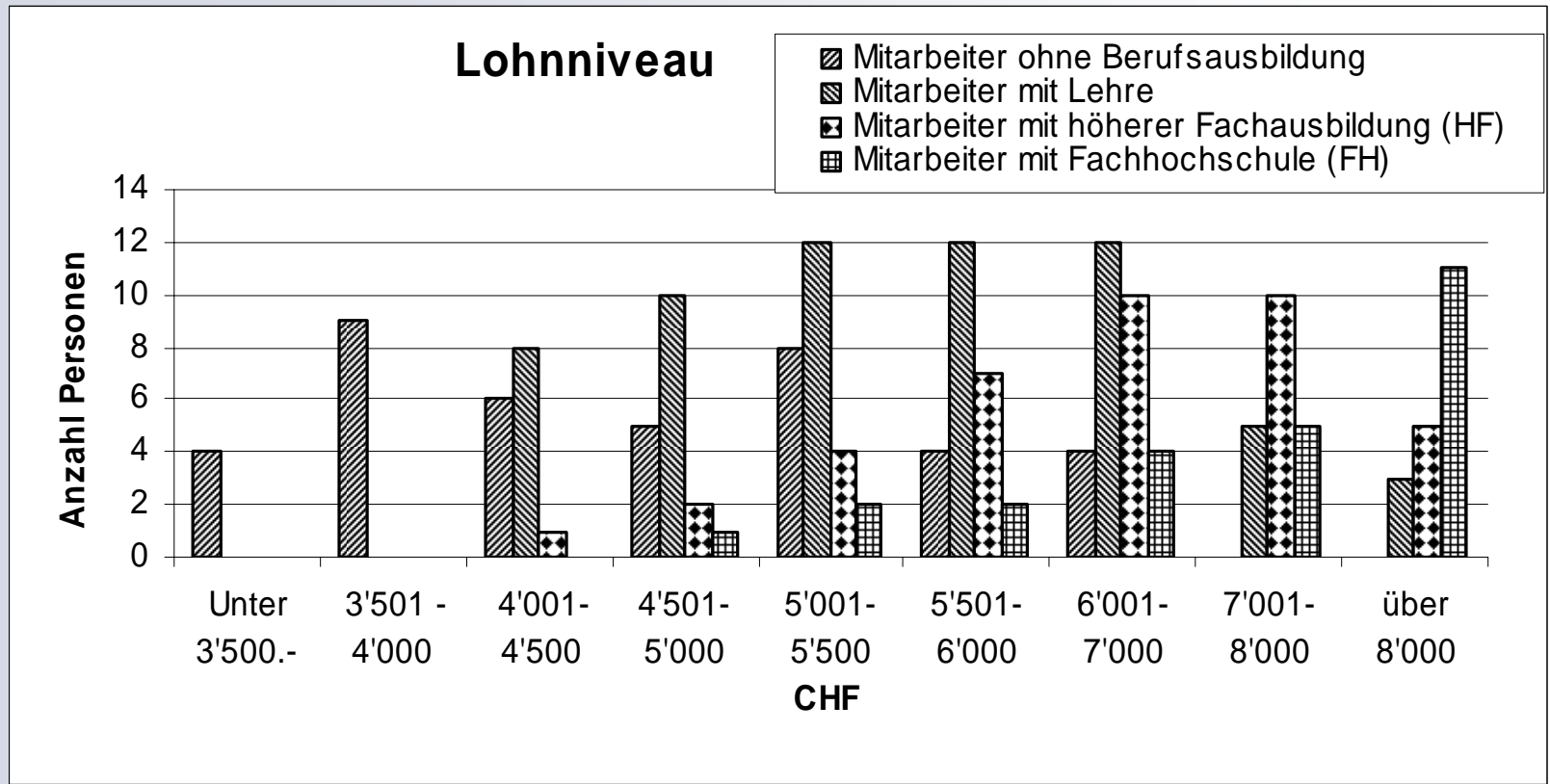
Lehrstellenangebot



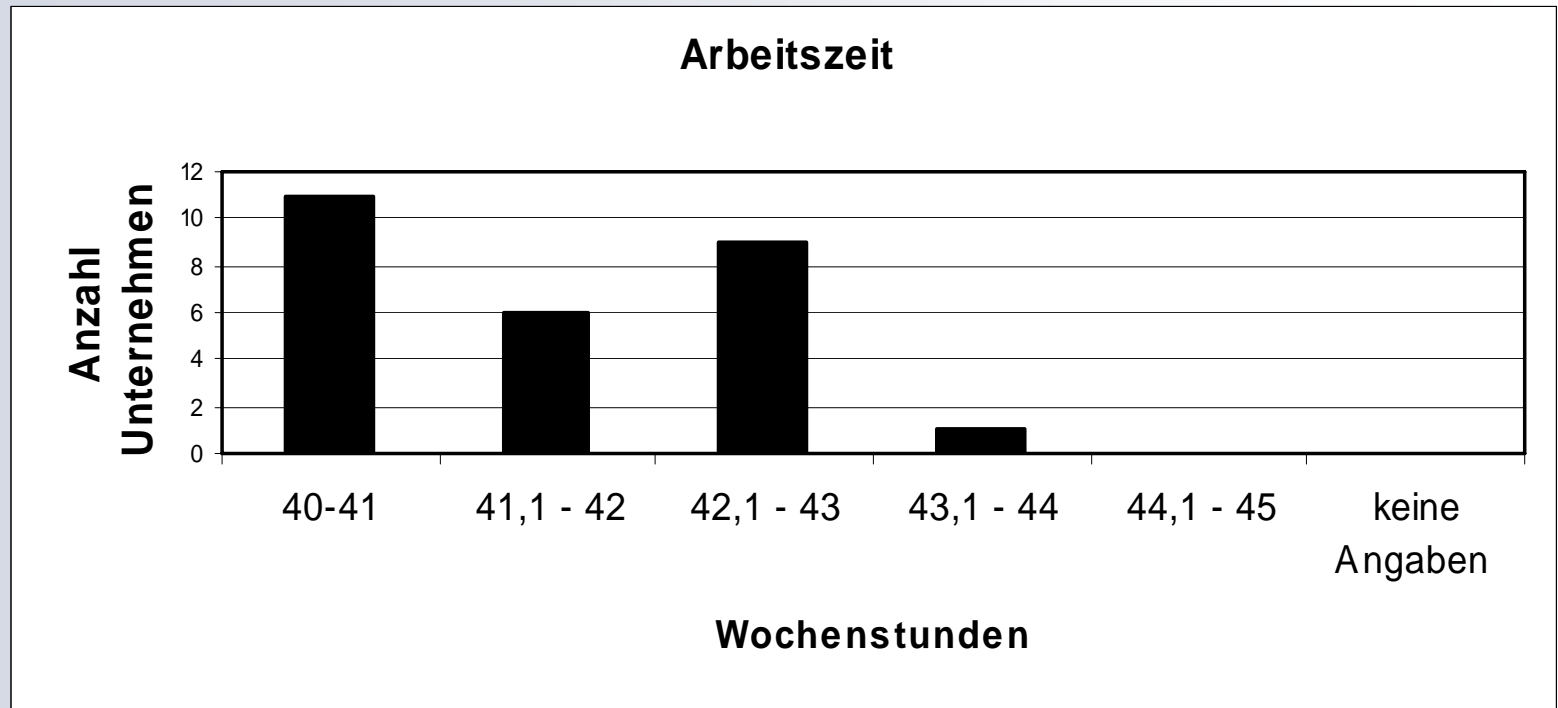
Geschäftsgang 2012



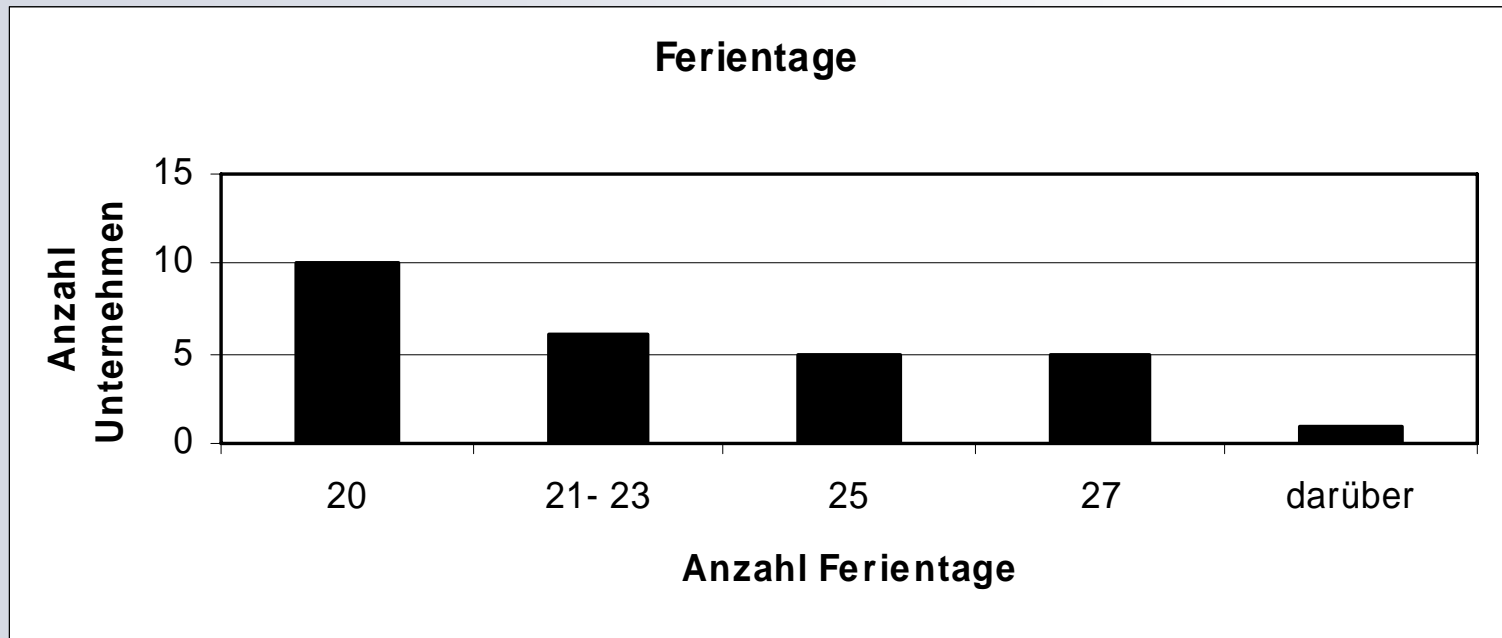
Lohnniveau



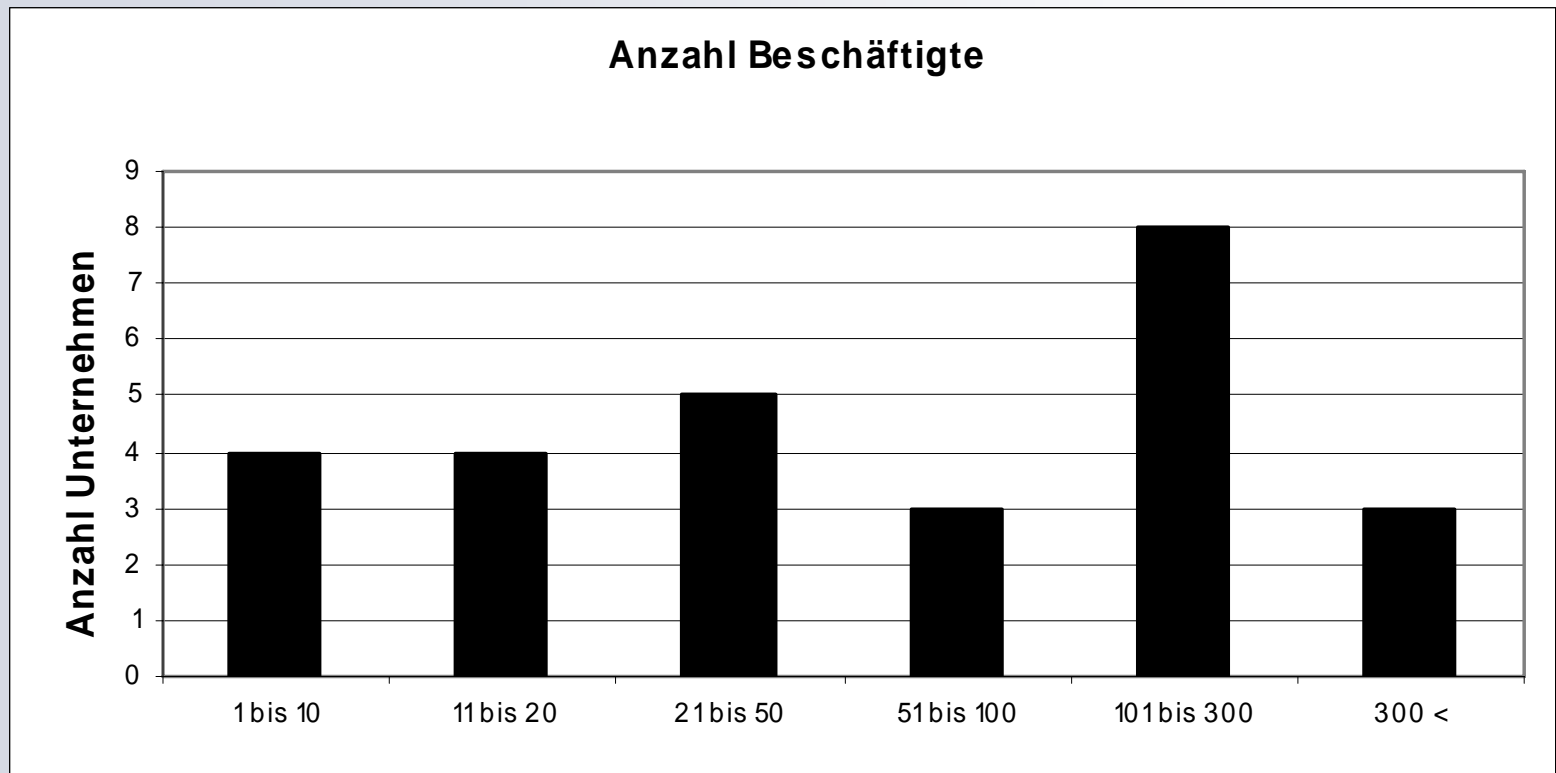
Arbeitszeit



Anzahl Ferientage pro Jahr (40-jährige MA)



Anzahl Beschäftigte



Unternehmungsart

